



Visit

The exhibit hall is open to the public. No reservation is required.

Open : Monday to Friday, 10:00 to 17:00. Closed on national and New Year holidays.

Admission : Free

Group visits

Two types of guided tours are available for groups of 5 to 16.

For details, visit our website.

https://global.jaxa.jp/about/centers/cac/tour.html#tab_area

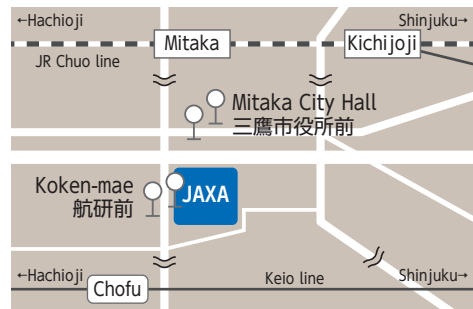


Guided tour 1	- Exhibit hall - For groups with general interests - 60 minutes
Guided tour 2	- Exhibit hall and one testing facility - For groups with in-depth interests (technical college students and above) - 90 minutes

Notes

- Nine designated parking spaces are available (not for buses).
- No pets allowed. Service dogs are welcome.
- No eating or drinking in the exhibit hall.
- For groups of 10 or more, please contact us in advance.

Access



JAXA Chofu Aerospace Center is about 20 minutes ride by taxi or bus from the nearest railway stations (Mitaka or Kichijoji on JR Chuo line or Chofu on Keio line).

Contact

Chofu Aerospace Center
Japan Aerospace Exploration Agency

Address

7-44-1 Jindaiji Higashi-machi, Chofu-shi,
Tokyo 182-8522

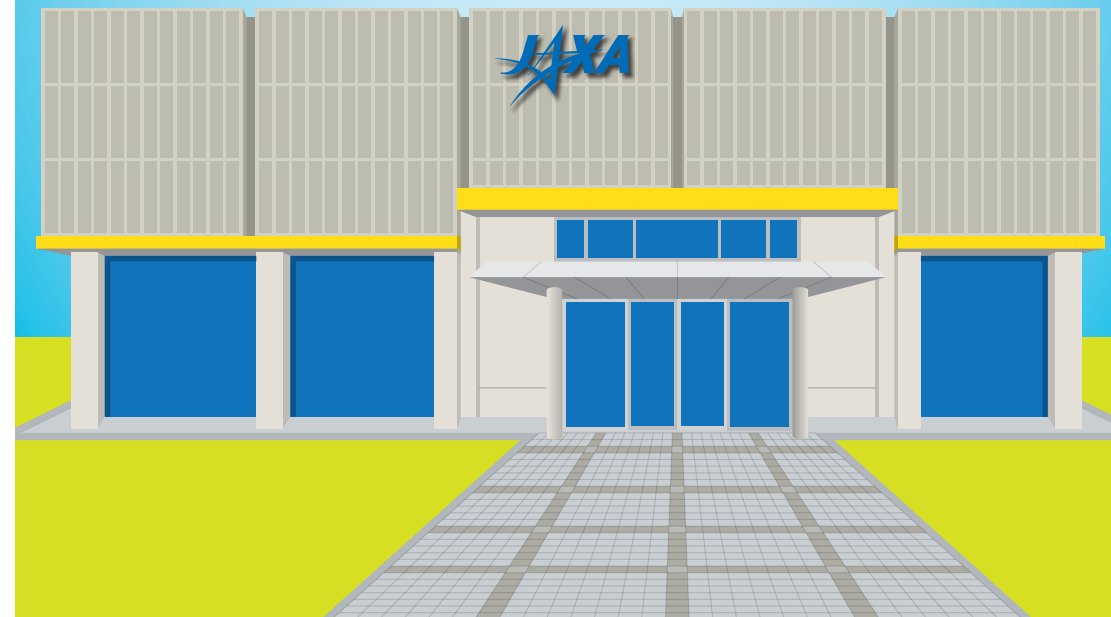
Email : CAC-KENGAJU@jaxa.jp

Web : <https://global.jaxa.jp/about/centers/cac/>

Bus routes		Get off at
From Mitaka station (south exit) on JR line		
Bus stop 3	Taka 65 (鷹65) for Jindaiji (深大寺)	Koken-mae
	Taka 66 (鷹66) for Chofu station north exit (調布駅北口)	
Bus stop 7	Taka 54 (鷹54) for Sengawa (仙川) or Koka-gakuen-higashi (晃華学園東)	Mitaka City Hall
From Kichijoji station (south or park exit) on JR or Inokashira line		
Bus stop 3	Kichi 01 (吉01) for Musashisakai station south exit (武蔵境駅南口)	Mitaka City Hall
Bus stop 4	Kichi 06 (吉06) for Chofu station north exit (調布駅北口)	
Bus stop 8	Kichi 14 (吉14) for Chofu station north exit (調布駅北口)	Koken-mae
From Chofu station (central exit) on Keio line		
Bus stop 11	Kichi 14 (吉14) for Kichijoji station (吉祥寺駅)	Koken-mae
	Taka 66 (鷹66) for Mitaka station south exit (三鷹駅南口)	

This information is subject to change. Please check our website for updates.

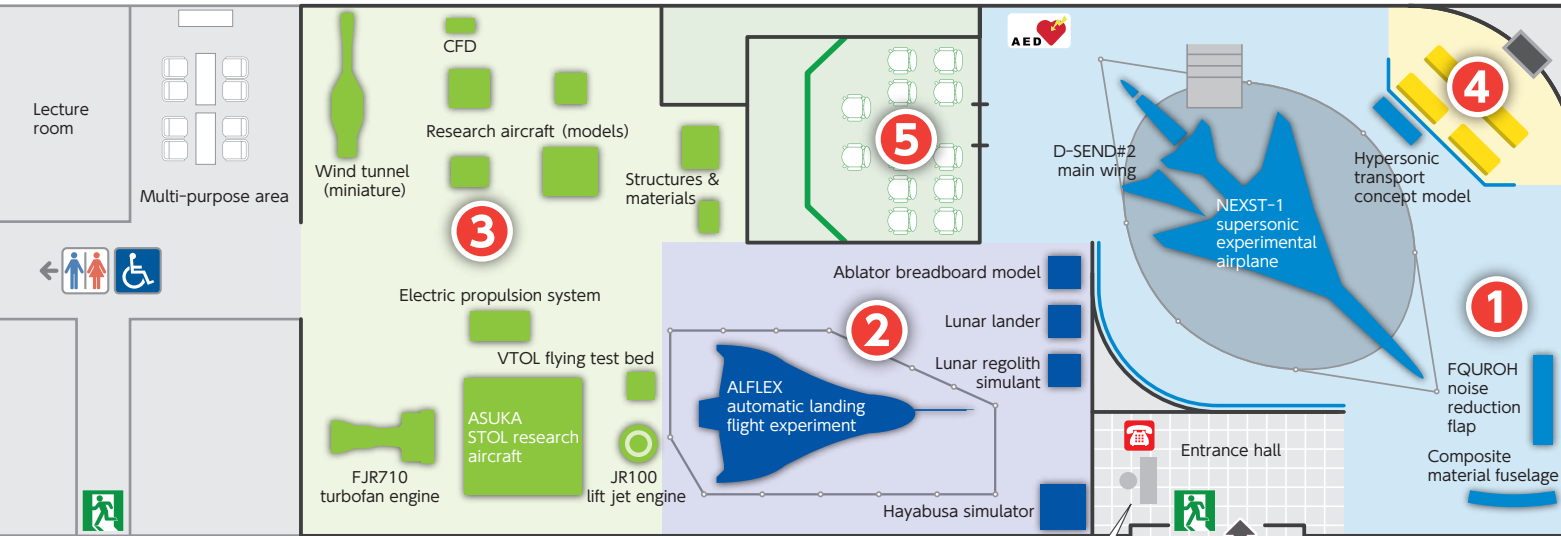
Chofu Aerospace Center Exhibit Hall





Exhibiting our achievements and ongoing research at Chofu Aerospace Center.

Exhibit hall Please note that the exhibits are subject to change without notice.



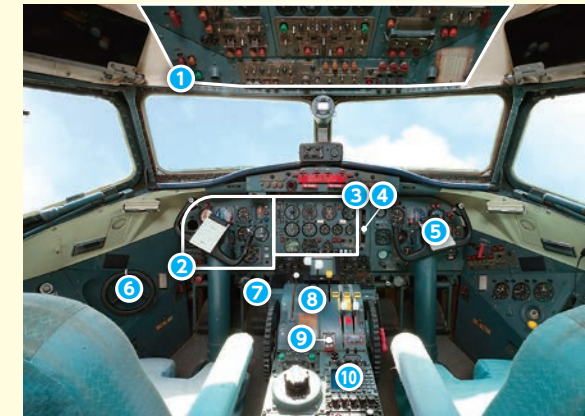
YS-11 cockpit Open air exhibit



View the instruments and airframe structure of a retired YS-11 (aircraft registration YS-11-118).

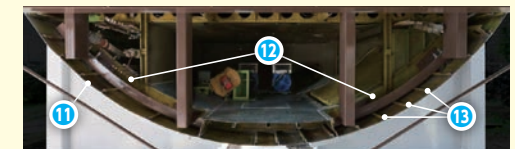
The other parts of the aircraft body are utilized in structure testing studies.

Cockpit



- 1 Overhead panel
- 2 Flight instruments
- 3 Engine display
- 4 Landing gear lever
- 5 Control column
- 6 Steering wheel
- 7 Rudder pedal
- 8 Throttle lever
- 9 Flap lever
- 10 Autopilot

Fuselage structure



- 11 Skin
- 12 Frame
- 13 Stringer

For YS-11 cockpit and space mission simulator, please contact us via the phone in the entrance hall.

1 Aeronautical technology

Discover our research on aeronautical technology towards the sky of the future.

2 Space technology

Explore space technology for future missions.

3 Fundamental technology

Learn the fundamentals of aerospace technology and testing facilities.

4 Video theater

Enjoy a variety of videos concerning our R&D activities.

5 Space mission simulator

Fly to space in our future spaceplane simulator.

