

Visit Guide

Japan Aerospace Exploration Agency

2-1-1, Sengen, Tsukuba, Ibaraki, 305-8505, Japan
<http://global.jaxa.jp/>
<http://global.jaxa.jp/about/centers/tksc/index.html>
 (Tsukuba Space Center)

Tour Reception Desk

TEL:029-868-2023 (10:00~16:30)

FAX:029-868-2851

CLOSED:Monday(irregular), Year-end and New Year holidays (from Dec.29 to Jan.3), and facility maintenance day (irregular). Please check our opening days on the web.

→ <http://global.jaxa.jp/about/centers/tksc/>

Self-Guided Tour (Space Dome/Planet Cube)

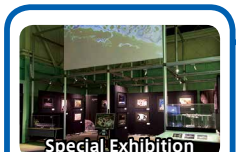
Open	10:00~17:00 (Spaca Dome opens from 9:30)	Admission	Free
Reservation	Prior contact to Tour Reception Desk for reservation is required if you come in group of 10 or more people or by chartered bus. If you come in group of 9 or less, no prior reservation is required.		



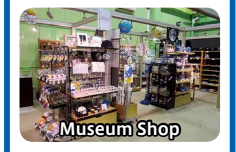
The Rocket Square



Visit Guidance/Tour Reception Desk

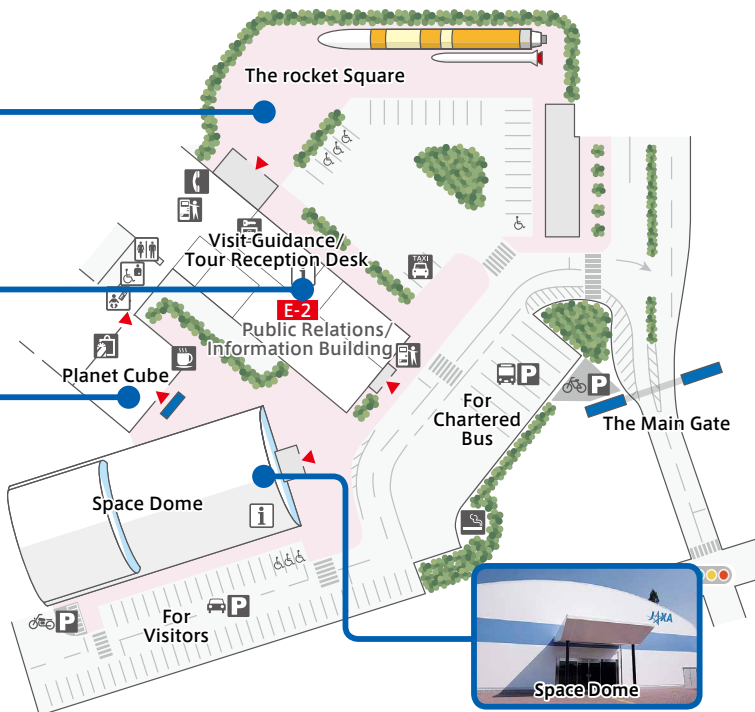


Special Exhibition



Museum Shop

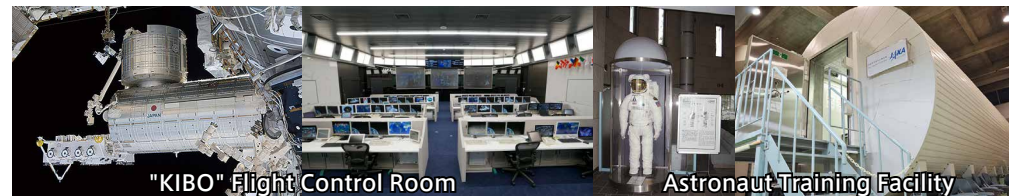
Planet Cube



Notice to TKSC visitors ● Please take your trash with you. ● Do not damage or destroy exhibits, facilities, devices, or buildings. ● Smoking is prohibited in TKSC except in designated areas. ● Eating and drinking are prohibited inside and around the Space Dome and Planet Cube, but permitted at E-2 building and cafeteria (C-2). The cafeteria is open only on weekdays and can be used by all guests with registration. ● Pets are not allowed except for service animals. ● TKSC is not responsible for any accidents, damages, or injuries that may happen to visitors.

Guided Tour (Advanced reservations required) 70mins.

The tour will take you to "KIBO" Flight Control Room and the Astronaut Training Facility. You can see realtime operations of "KIBO", the Japanese Experiment Module on the International Space Station, and know about astronauts' selection, training, and healthcare.



"KIBO" Flight Control Room

Astronaut Training Facility

Admission

Adult (18 years old or over) Except high-school students	500 yen (tax included)
High-school students and 17 years old or younger (High-school students are required to show their student ID.)	Free
Teachers leading a school trip (for educational purposes sponsored by the school) with students who are high-school students or younger (Please show your teacher's ID)	
People with disabilities and one attending person (Please show us your disability certificate (physical, rehabilitation, mental, or A-bomb disability certificate).)	

Reservation

- Phone Tour Reception Desk ☎029-868-2023 (10:00~16:30)
- Web http://fanfun.jaxa.jp/visit/tsukuba/tour.html#visit_tour

Notice

English tour

If you would like a tour in English, early reservation is strongly recommended because English tour is not always available for schedule conflict reasons.

Individual tourist

You will board Tsukuba Space Center's tour bus.

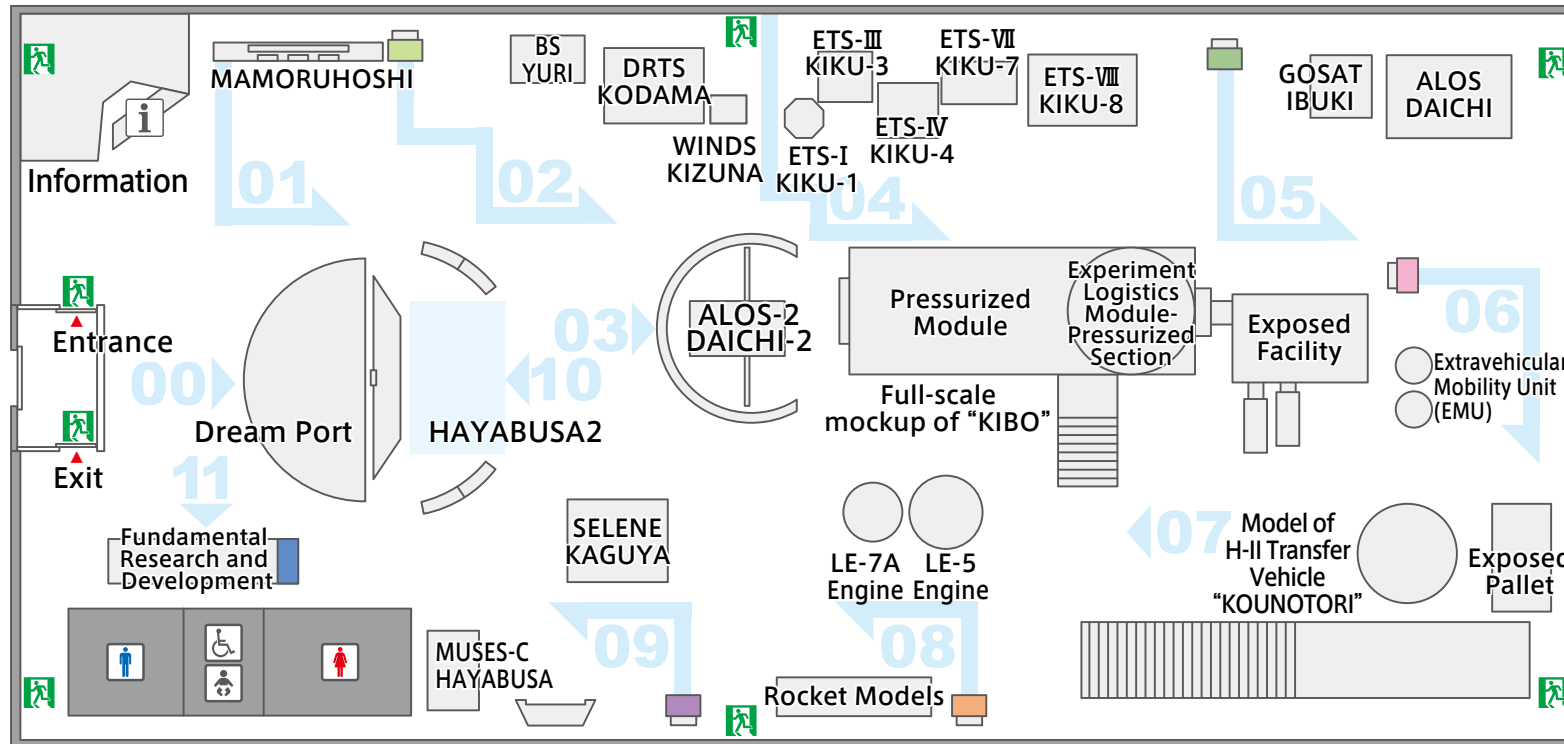
Weekdays and Sat., Sun., National Holidays	11:30	15:00
--	-------	-------

Group tourist

If you come to TKSC by chartered bus, the bus is used to transport you to the tour site.

Weekdays and Sat., Sun., National Holidays	10:00	11:30	13:30	15:00
Number of bus available for tour	2	1	2	1

Space Dome floor map



00 Dream Port

Beautiful 1/1,000,000 scale model of the Earth welcomes you.

01 MAMORUHOSHI

Overview of the Tsukuba Space Center and introduction of satellite activities.

02 Utilization for Communications and Positioning

Overview of the mission and its achievement of Communication Satellites and Positioning Satellites including a test model of the Data Relay Test Satellite "KODAMA" (DRTS).

03 Satellites Opening up the Future

Hot topics of satellites — Satellites launched recently and to be launched in the future.

04 The Challenging History of JAXA's Space Development

The history of Japan's space development and accumulated numerous achievements, showing an example of Engineering Test Satellite "KIKU" (ETS) series.

05 Utilization for Earth and Environment Observation

Overview of the mission and its achievement of Earth Observation Satellites including a test model of the Advanced Land Observing Satellite "DAICHI" (ALOS).

06 Human Space Activities Space Environment Utilization

Overview of the International Space Station (ISS) project and utilization of the space environment, showing a full-scale model of the Japanese experiment module "KIBO" on the ISS and a test model of the H-II Transfer Vehicle "KOUNOTORI" (HTV).

08 Space Transportation Systems

Overview of Japan's launch vehicles showing the actual LE-7A and LE-5 rocket engines used in combustion tests and these 1/20 scale models.

09 Space Science and Solar System Exploration

Overview of space science & Lunar and Planetary exploration showing a test model of the Selenological and Engineering Explorer "KAGUYA" (SELENE) and 1/2 scale model of the HAYABUSA.

10 HAYABUSA2

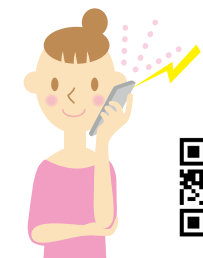
Showing a full-scale model of the Asteroid Explorer "Hayabusa2".

11 Fundamental Research and Development

Introducing Fundamental research & development and our new challenges of space utilization by displaying "real" equipment used for spacecraft.

Audio guidance

Audio guidance is available at the Space Dome.



<http://tkscdome-guide.com>